



PÕLLUMAJANDUSAMET

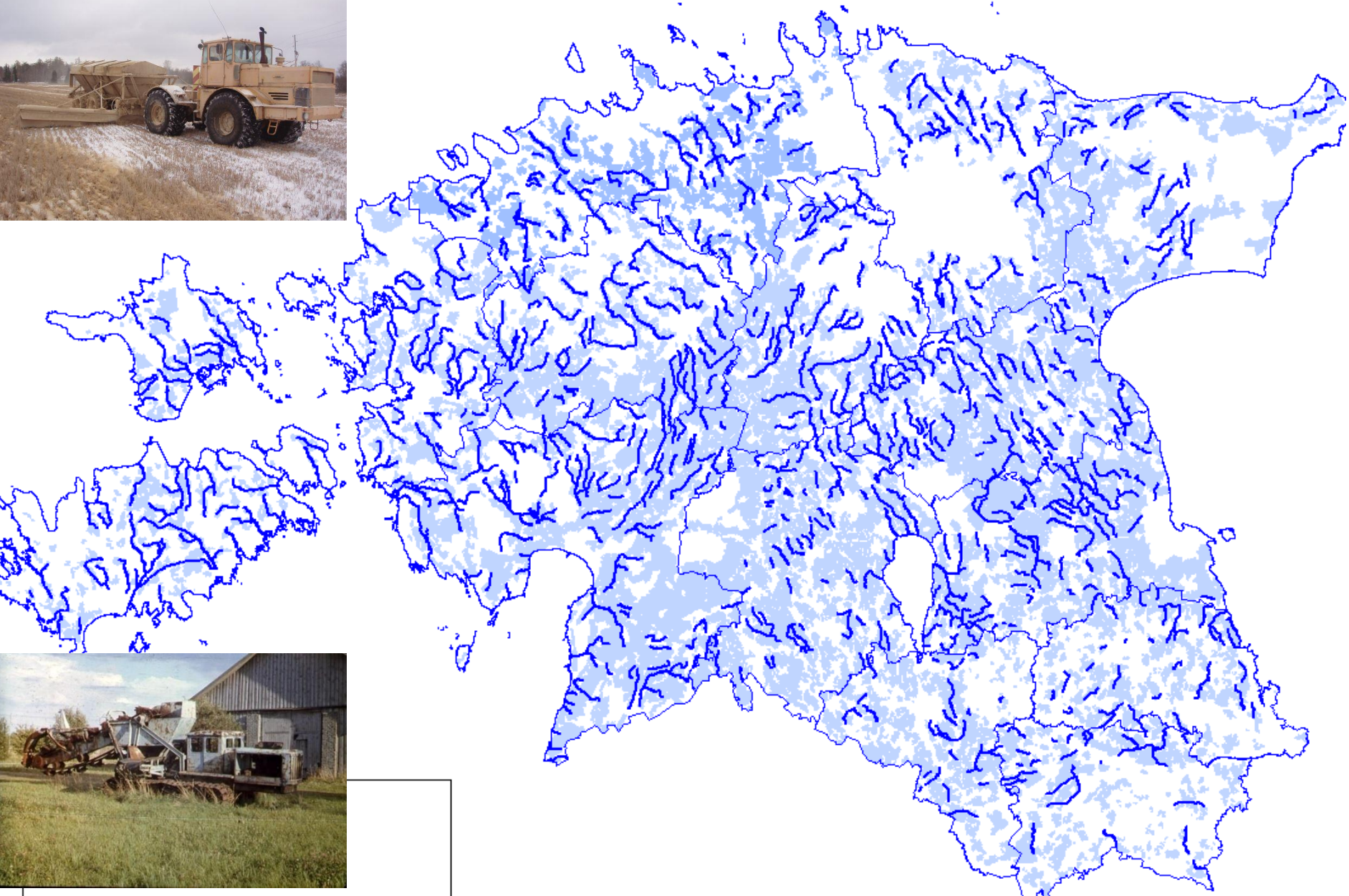
Melioration related to Peatlands

Ele Liivamägi

Põllumajandusamet / Agricultural Board

25.02.2016

In Estonia ca 30% of land is drained



The activities of Agricultural Board in 2010 - 2015

Total area of drained lands:

1 358 890 ha

arable land 639 850 ha

forest land 719 040 ha

The length of drainage systems 24 652 km

catchment area more than 10 km² 5634 km

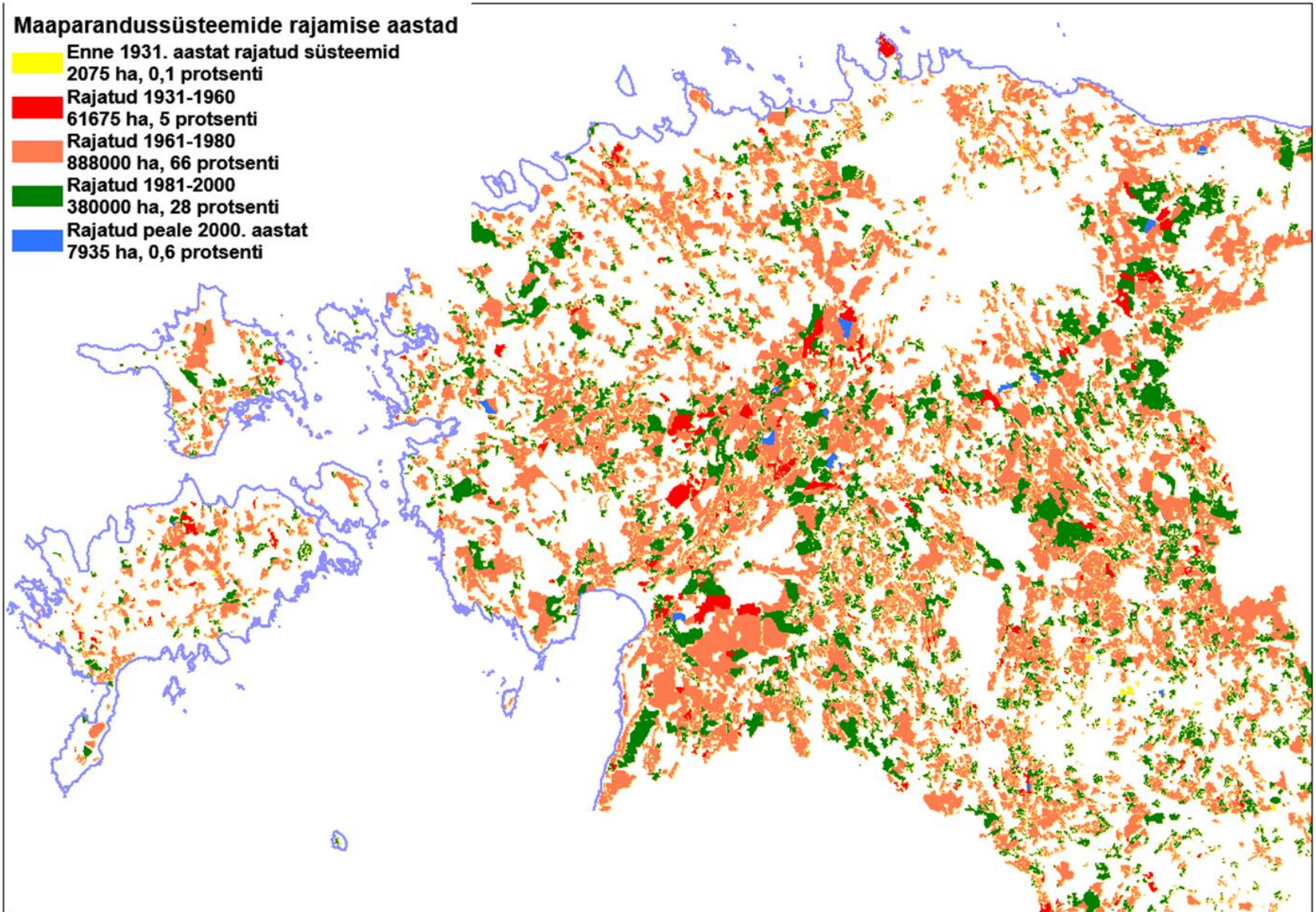
Melioration systems are considered only areas that:

- drain or irrigate forest lands or arable lands.
- don't include drainage systems, that conduct waters from mining areas (incl peat) and dwelling areas

Most of the systems are established before 1990-ies

Maaparandussüsteemide rajamise aastad

■	Enne 1931. aastat rajatud süsteemid
■	2075 ha, 0,1 protsenti
■	Rajatud 1931-1960
■	61675 ha, 5 protsenti
■	Rajatud 1961-1980
■	888000 ha, 66 protsenti
■	Rajatud 1981-2000
■	380000 ha, 28 protsenti
■	Rajatud peale 2000. aastat
■	7935 ha, 0,6 protsenti



The tasks of Agricultural Board:

- Issue the permits for reconstruction of old and establishment of new melioration systems
- Organise the maintenance of common recipient areas, maintained by State (5438 km)

EU support for maintenance of melioration systems

- MAK/RDP 2004-2006 measure 3.4
- MAK/RDP 2007-2013 measure 1.8
- MAK/RDP 2014-2020 measure 4.3

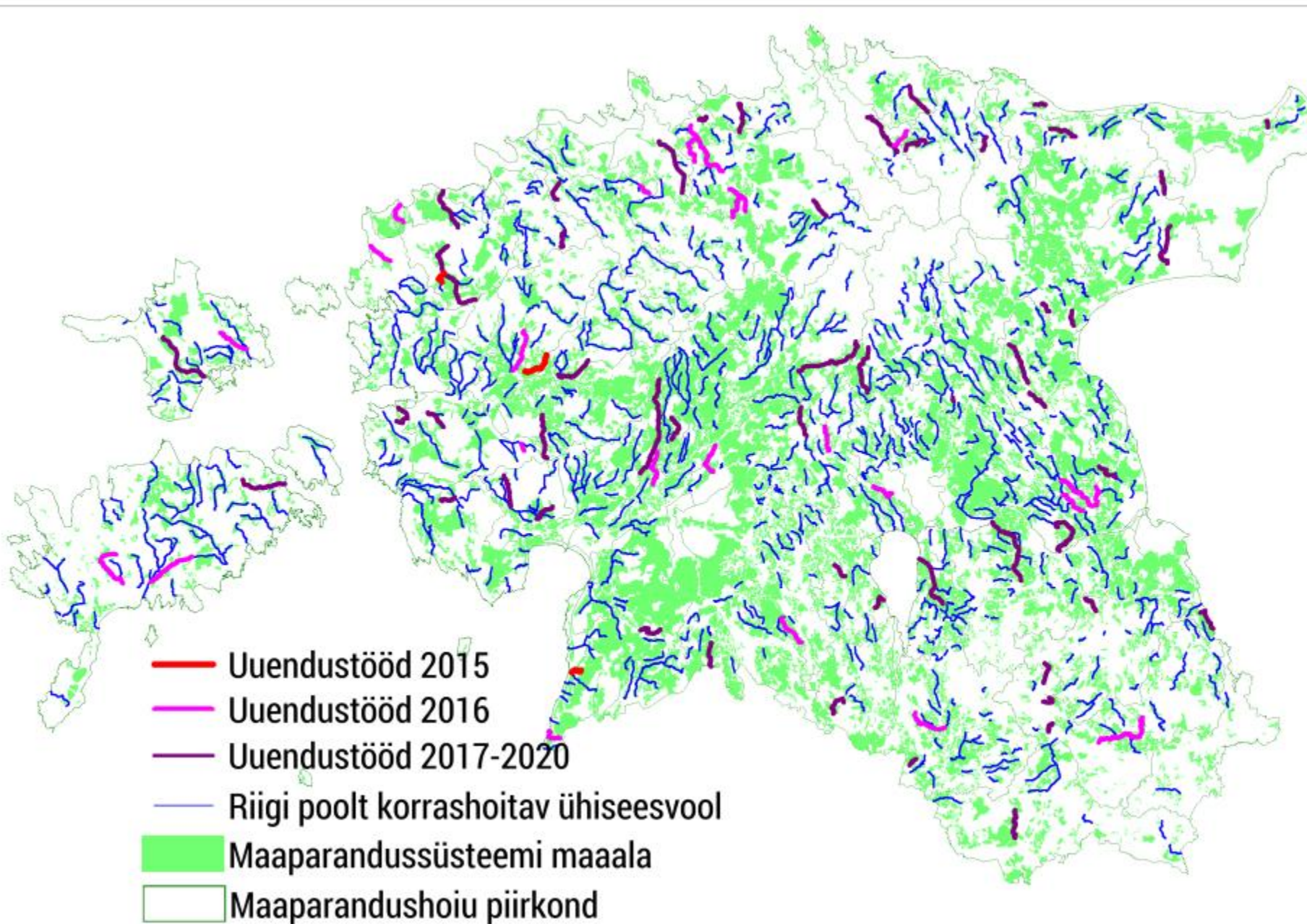
EU has financed the reconstruction of about 10% of Estonian melioration systems.

No subsidies were paid to the areas, where more than 30% of area was on peaty soils.

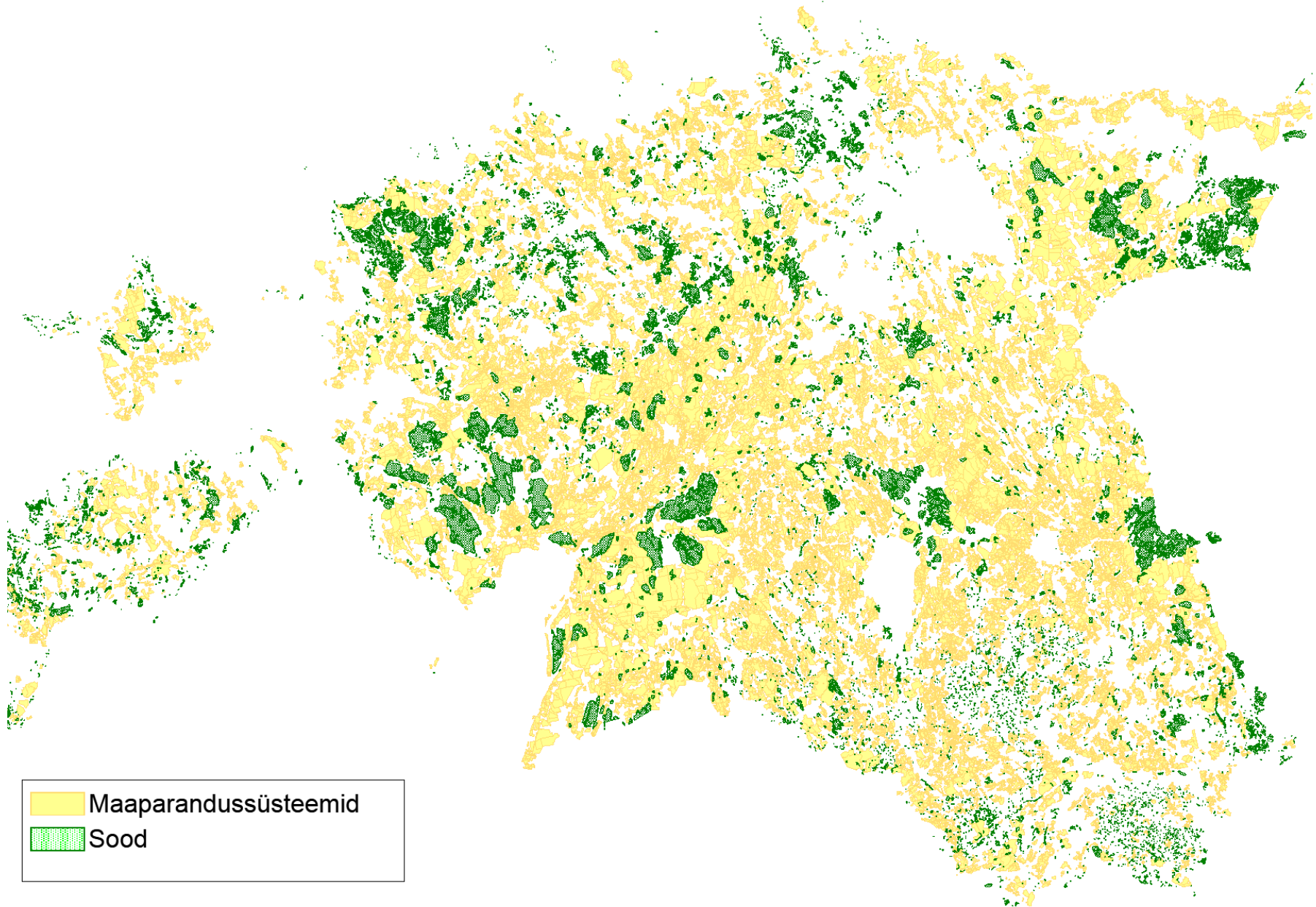
RDP 2014-2020 measures for catchment care-take in areas, where State is responsible

- In autumn 2015 the first applications were taken to PRIA to renovate 17 recipients – altogether 117,7 km.
- Annually available ca 900 000 €, altogether 4,9 million €.
- Renovation Works have started by now.
- 2016. the plan is to apply for renovation of 12 recipients, altogether 126,9 km.

2015 – 2020 will be renovated:



The overlap of mires and melioration



Agricultural Board and Mires

- Mire restoration projects, financed by EU- in case of overlap we do register entries in Melioration Systems Register (excluding the ditches)
- The melioration systems' exclusion can only be done by the will of the system owner i.e. the landowner (Melioration law)



PÕLLUMAJANDUSAMET

Aitäh!
Thank You!

ele.liivamägi@pma.agri.ee